

STEM PROJECT CENTER



Board of Trustees

- Ms. Rebecca Fox Board President
- Mr. Joe Adams Vice President
- Mr. Henry Dibrell Treasurer
- Mr. Bryan Michalsky Secretary
- Mr. Charles Griffin Sergeant-at-Arms
- Dr. Bill Proctor Member
- Mr. Terry Huckaby Member

Administration

- Mr. Alton Frailey Superintendent
- Mr. Thomas Gunnell Chief Operations Officer
- Dr. Christine Caskey Chief Academic Officer
- Dr. John Alawneh Chief Information Officer
- Mr. Bill Moore Chief Financial Officer
- Dr. Andrea Grooms Executive Director, Communications
- Mr. Peter McElwain District Architect/Planner
- Ms. Rhonda Ward Executive Director of Secondary Curriculum & Instruction
- Dr. Sarah Martin Director of Career and Technical Education
- Dr. Anna Webb-Storey Principal of Miller Career & Technology Center
- Becky Bracewell Tucker Principal of Raines HS/Opportunity Awareness Center
- Mr. Art Campbell Project Manager

Board of Trustees and Administration / Staff



Community Members:

Bill Callegari
John Curry
Jerry Kassman
Ken Knapp
Todd Kortum
Emrys McMahon
Mike Outlaw
Walt Sass
Kartik Sharma
Elizabeth Waters

Katy ISD Members:

John Alawneh
Curtis Alden
Becky Bracewell-Tucker
Linda Calvi
Art Campbell
John Crow
Alton Frailey
Judy Gray
Tom Gunnell
Catherine Harter
Alene Lindley
Sarah Martin
Peter McElwain
Jamie Rayford
John Sanders
Janet Theis
Rhonda Ward
Anna Webb-Storey

SHW Group Members:

Luis Ayala
Tracy Eich
Matthew Gvist
Jennifer Henrikson
Taryn Kinney
Raul Pinol
Laura Sachtleben
Raechel Schneider

STEM Committee Members



Office of Emergency Management

John Bremer –Emergency Management Coordinator

James Grima – Safe Schools Project Manager

Katy ISD Police

Mark Hopkins – Chief of Police

Robert Jinks – Assistant Chief of Police

Maintenance & Operations

Chris Cardiff – Assistant Director of Maintenance and Operations Grounds

Peggy Caruso –Assistant Director of Maintenance Environmental

Ron Chandler –Director of Maintenance

Scott Dunlap – Energy Management Coordinator / Demographics Assistant

Scott LaMarr – Director of Operations

Kathy McDonald – Executive Director Maintenance & Operations

Michael Matej – Utility Conservation Manager

Community Services

Laurie Mitchell – Marketing and Advertising Coordinator

Cydney Wright – Facilities Coordinator

Technology

Scott Donahue – Physical Security Coordinator/Senior Engineer

Brenda White – Technology Project Manager / Director of Project Management

Support Staff Design Input



DESIGN PROCESS



Case Study Responses

Quality Light & Connection to the Outdoors

Well lit

Daylight

Outdoor work space

Overflow to exterior through overhead doors

Functionality

Tool & storage accessibility

Quality ventilation

Low-maintenance materials

Shop & project space

Flexibility & Openness

High-bay spaces w/ exposed ceilings

Flexible work spaces

Multi-functional

Aesthetic

Use of natural materials

Simple forms

Transparency & connectivity



SHW Group
Arbor Building
University of Houston Clear Lake



Perkins + Will
Commonwealth Center for
Advanced Manufacturing



Shimoda Design Group
Tom's Shoes Headquarters

Meeting #1



Project Vision Goals



Meeting #1

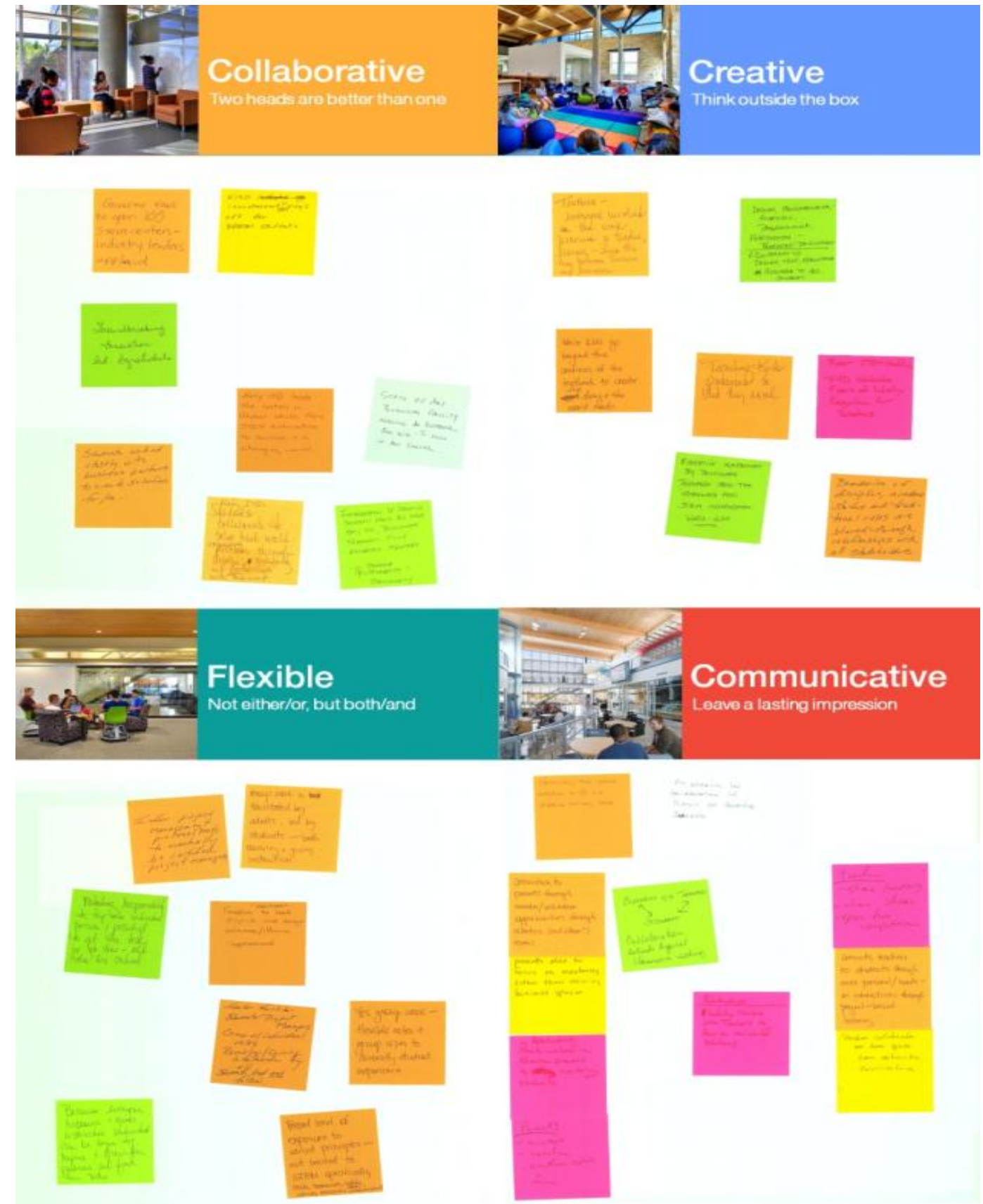


Project Vision Goals

The STEM Project Center will **catalyze dynamic relationships** across Katy ISD through the intersection of **creative students, passionate teachers, and fully engaged mentors.**

The STEM Project Center will enable **creativity, communication, collaboration, and flexibility** as **roles are explored and responsibilities rotated**; for example: teachers will be learners, students will be leaders, and mentors will be collaborators.

The STEM Project Center will offer a new forum for learners to **explore diverse interests** through **hands-on activities relevant to our changing world.**



Meeting #1



PROJECT PROGRAM



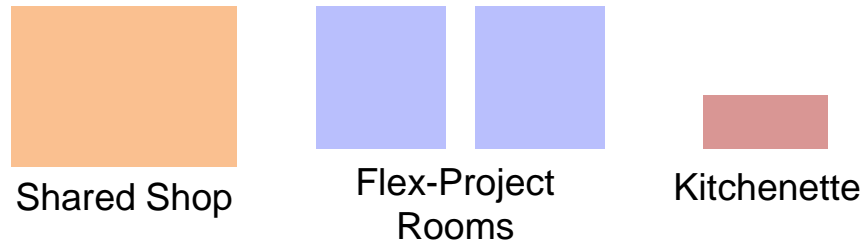
Administration



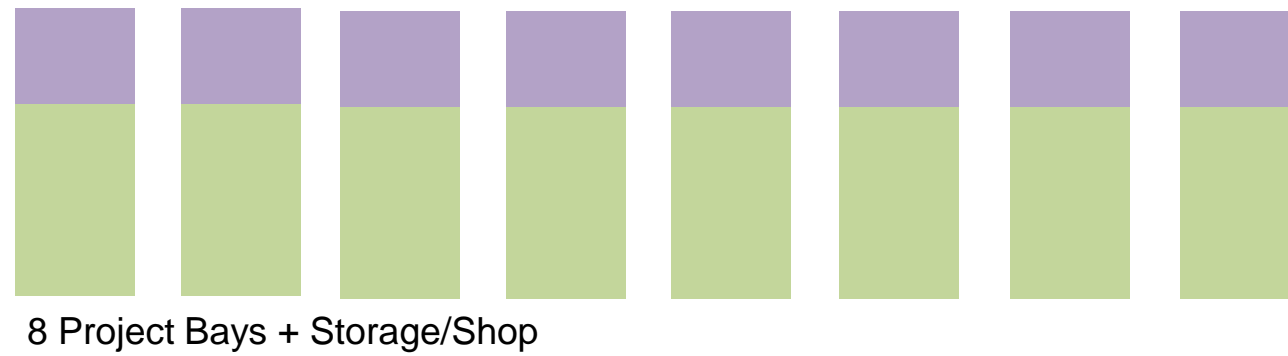
High-Bay



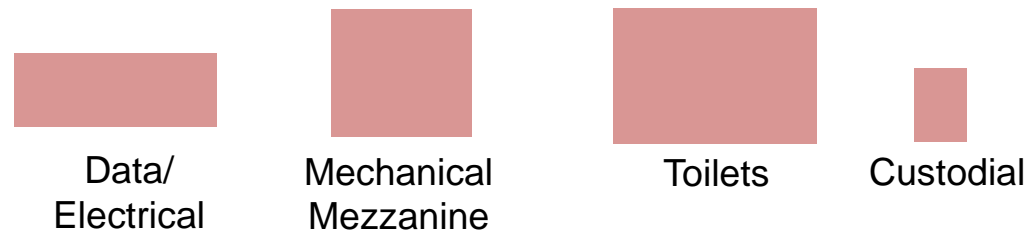
Shared



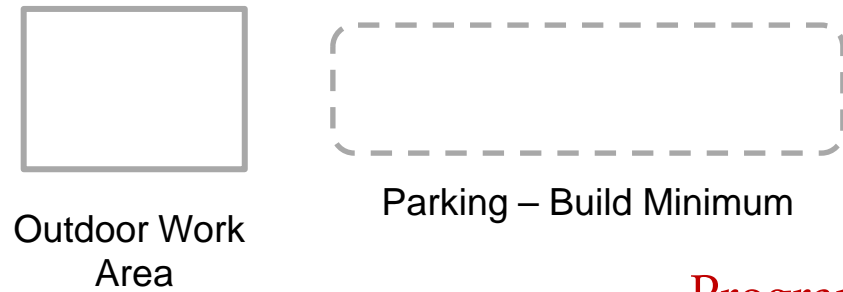
Project Bays



Building Support



Site Improvements



23,990 sf

Program



PROJECT PARAMETERS





Raines High School

Miller Career & Technology Center

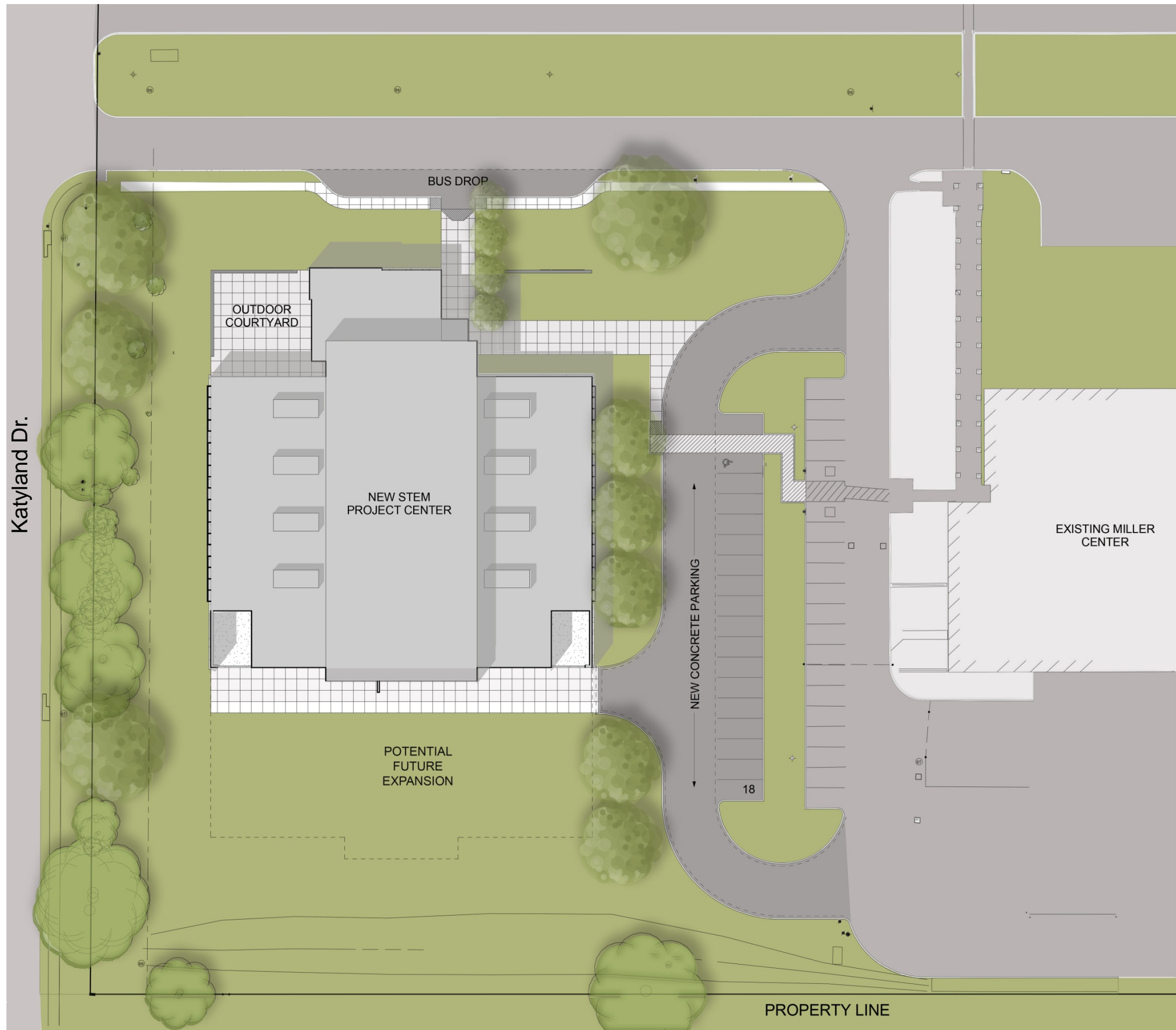
SITE

Katyland Drive Expansion

PROJECT LOCATION

SITE & FLOOR PLAN DEVELOPMENT





Site Plan

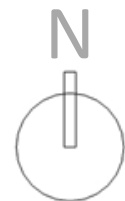
STEM Project Center





Floor Plan

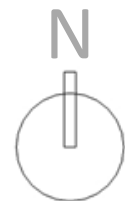
STEM Project Center

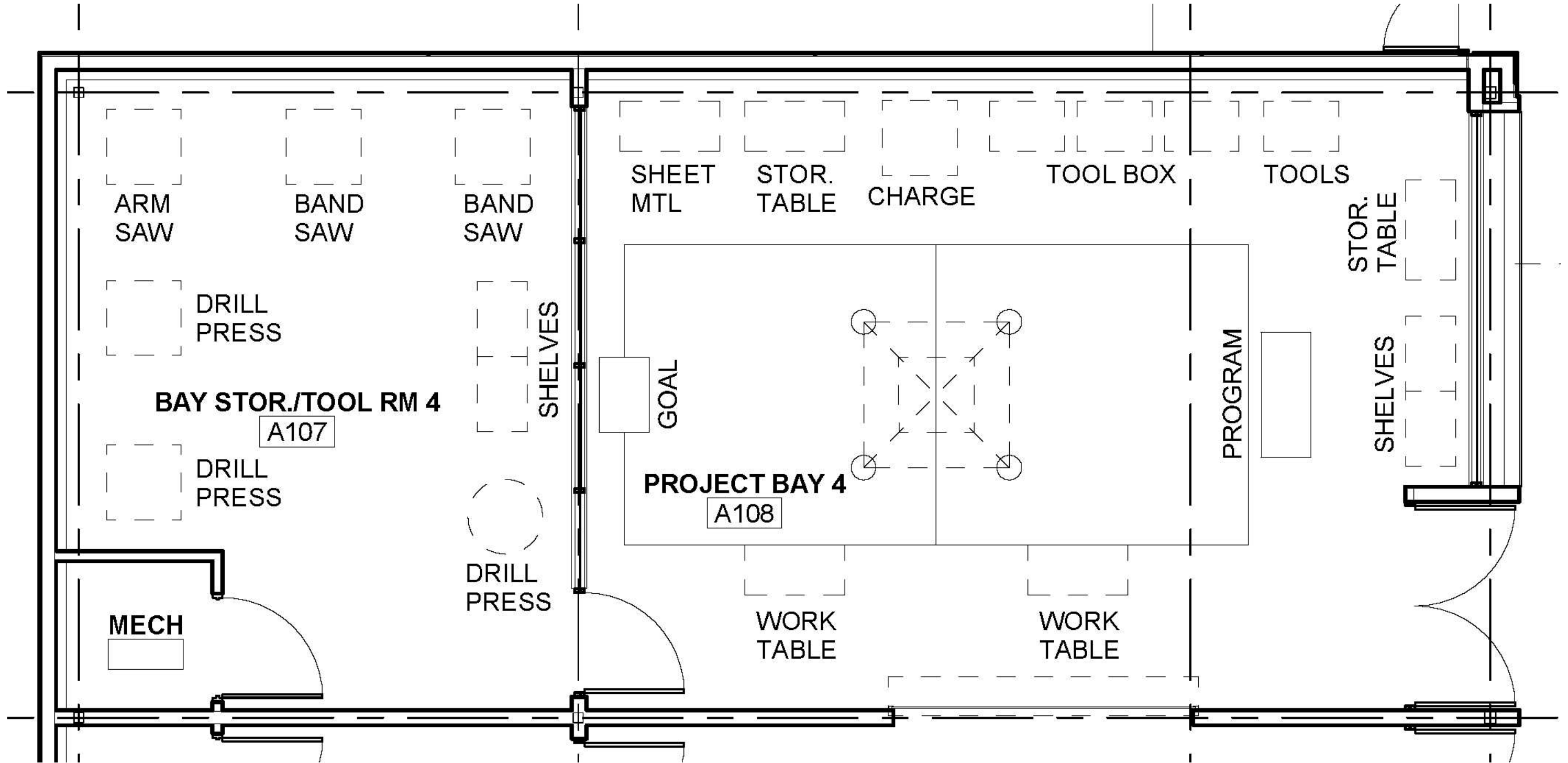




Potential Future Expansion Floor Plan

STEM Project Center

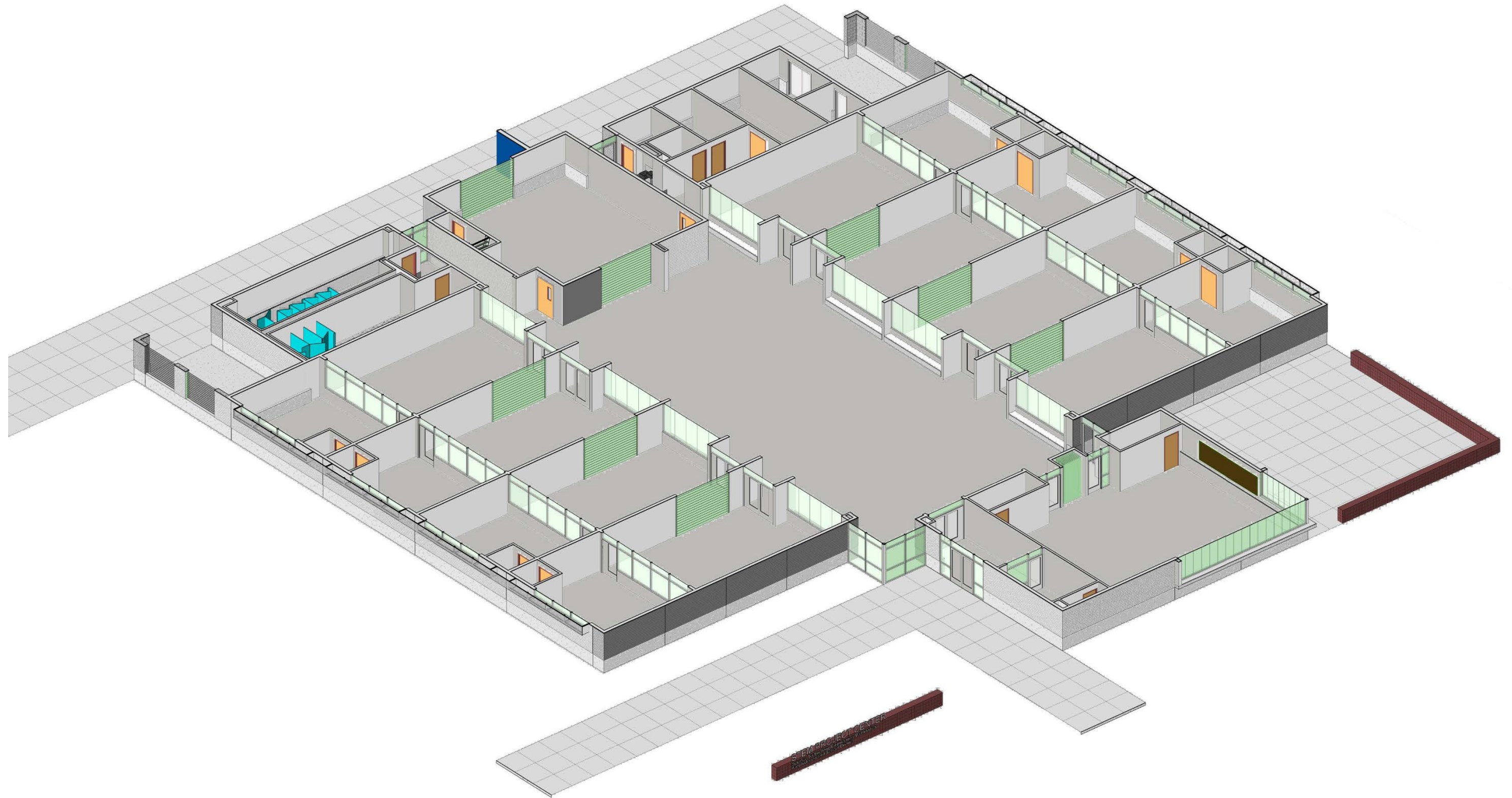




Enlarged Project Bay Plan

STEM Project Center

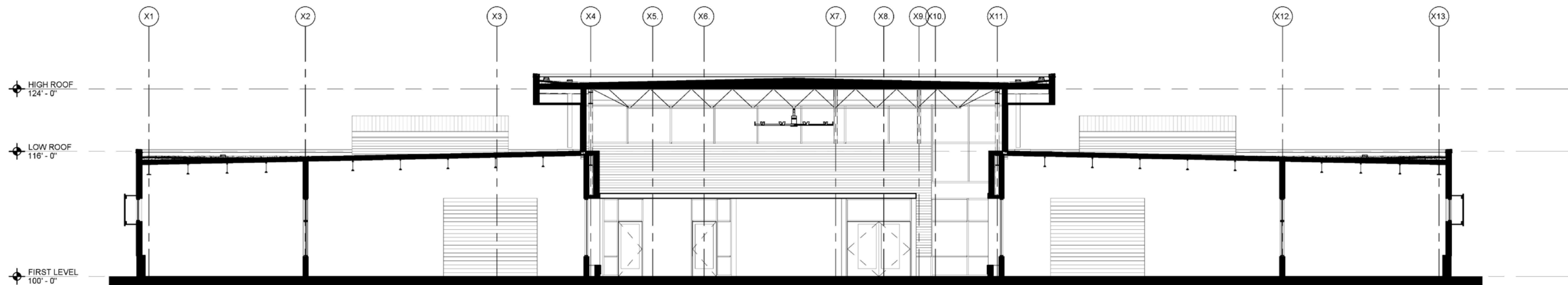




Axonometric View

STEM Project Center

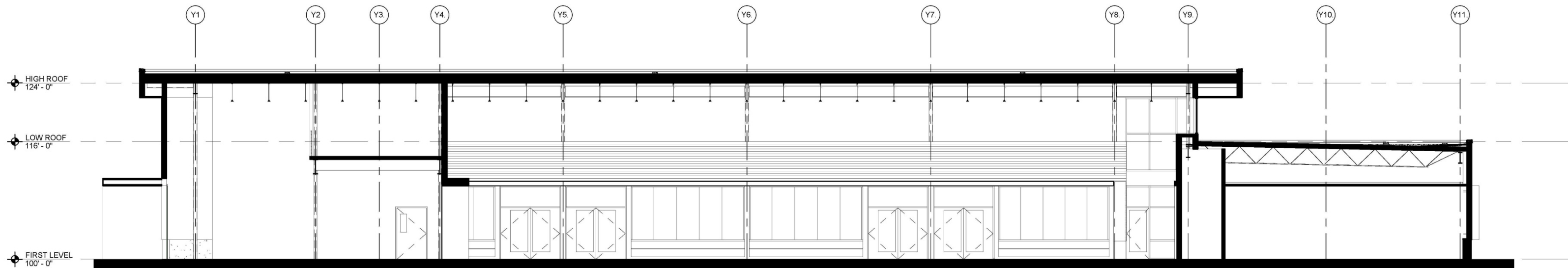




Transverse Section

STEM Project Center





Longitudinal Section

STEM Project Center



PROJECT RENDERINGS



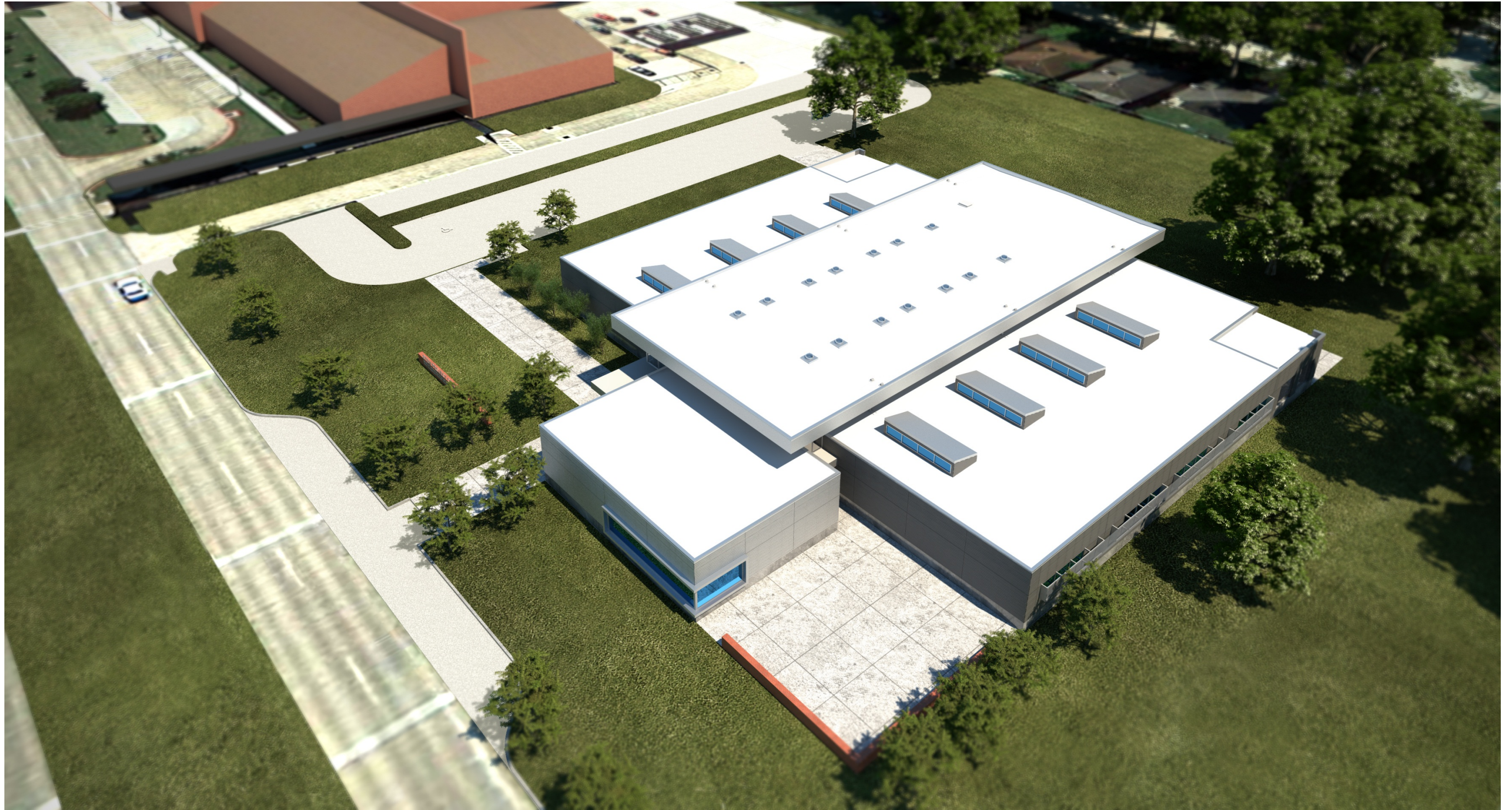












Aerial Rendering

STEM Project Center





Rendering – Front Entry





Rendering - Katyland Dr. View





Rendering – High Bay Facing North





Rendering – High Bay Facing South





Rendering – High Bay Facing South





Rendering - Project Bay



PROJECT SCHEDULE AND BUDGET



The following project schedule milestones have been established at this time:

- Schematic Design and Design Development..... July – October 2013
- DD Presentation to Board of TrusteesOctober 21, 2013
- Construction Document Production End of October 2013 – January 2014
- Obtain Competitive Sealed Proposals Early February 2014
- Presentation of Construction Contract to Board of Trustees End of February 2014
- Construction (9 months) March – December 2014

Project Schedule



STEM PROJECT CENTER

- Approximately 24,000 SF
- Current Estimated Total Project Cost: \$4.5 Million

STEM PROJECT CENTER
Science Technology Engineering Mathematics
Katy Independent School District



QUESTIONS

