

ATLANTA SCIENCE FESTIVAL

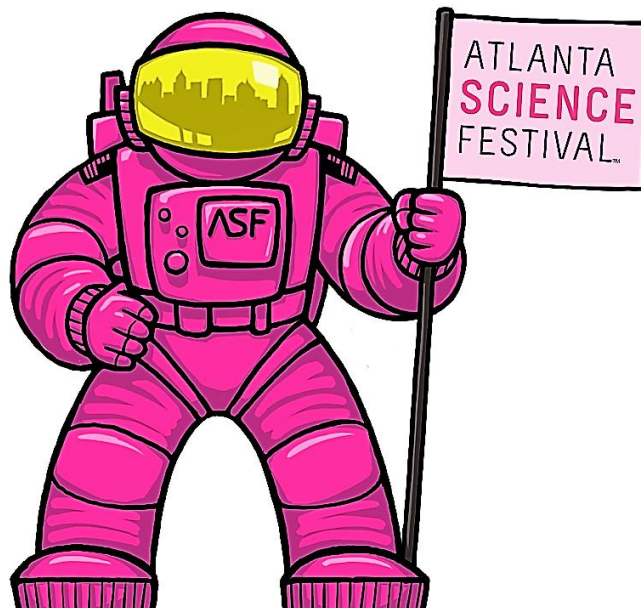
2017 Exhibitor Packet

Thank you for being an exhibitor and joining us at the Atlanta Science Festival Exploration Expo on Saturday, March 25, 2017! The information below includes directions to the off-loading area for your booth location as well as parking options during the event. If you have any questions or concerns regarding this information please contact Andi Chaney with Destination South Meeting & Events, achaney@destinationsouth.com or 404.702.2885.

EVENT TIMELINE:

LOCATION: The South Park Area of Centennial Olympic Park

TIME	ITEM/ACTIVITY
7:00 AM	Exhibitor Off-Loading + Set-Up Begins
10:30 AM	ALL Exhibits Must Be Set & Event Ready
11:00 AM	Gates Open + Expo Begins!
4:00 PM	Expo Ends
4:10 PM	Exhibitor Breakdown Begins
6:00 PM	ALL Exhibits Must Be Completed + ALL Exhibit Items Have Been Removed



ATLANTA SCIENCE FESTIVAL

OFF-LOADING, SETTING UP:

- Exhibitor off-loading will begin at **7:00AM on Saturday, March 25th**. During this time, South Park will be closed off to the public and will only be available for exhibitors off-loading and setting up their exhibit booths for the Expo.
- There are two loading dock locations that will be used.
- You will be assigned a loading dock location and time based on the location of your booth at the Expo. (See schedule below).
- Upon arrival, you will receive a DOCK PASS that will display your name and phone number. This dock pass **MUST** be visible on the dash of your vehicle at all times during loading and unloading.
- **All exhibits must be set and event ready no later than 10:30AM.**
- You will have **20 minutes** to unload your vehicle and transport all items to your booth.
- We suggest that you bring a cart or hand truck with you to assist in moving your equipment from your vehicle to your booth location. We will have extra hand trucks on-site, but cannot guarantee one will be available.
- Make certain staff and volunteers working in your exhibitor booth know the name of your exhibit, the zone/location, booth number, their volunteer assignment/responsibility, and the cell phone number for the person in charge of your booth.
- Your booth volunteers will not be required to check-in with the Expo. The Expo Volunteer Booth is for ASF's pink-shirted volunteers only (i.e. those who are staffing the event, not your booth). Exhibitors' own volunteers should proceed directly to their exhibit booth.
- Immediately after off-loading your vehicle, we ask that you please move your vehicle to a parking lot located nearby before returning to set-up your exhibit. (See below for parking options.) We have over 100 exhibitors to set up in three hours and truly appreciate your assistance in following this process.

ATLANTA SCIENCE FESTIVAL

SET-UP DOCK SCHEDULE:

<p style="color: #e91e63; font-weight: bold; font-size: 1.2em;">DOCK ONE</p> <p>Located at the corner of coned-off lane closure along Centennial Olympic Park Drive (Labeled in Pink Box on the Attached Map)</p>	TIMES	BOOTH NUMBERS
	8:00 AM	T-701, T-705, T-719
	8:30 AM	T-703, T-707, T-709
	9:00 AM	T-711, T-713, T-715, T-717
	9:30 AM	T-721, T-723, T-725
	10:00 AM	T-727, T-729

<p style="color: #00bcd4; font-weight: bold; font-size: 1.2em;">DOCK TWO</p> <p>Located at the entrance to the park off Marietta St. onto Andrew Young International (Labeled in Teal Box on the Attached Map)</p>	TIMES	BOOTH & VEHICLE NUMBERS
	7:00 AM	E-641, E-639, E-637, E-635, I-541, I-543, I-545, D-421, D-407, D-425, C-211, C-209
	7:30 AM	E-601, E-615, E-605, E-623, I-511, I-509, I-507, I-505, D-423, D-409, P-301, C-205
	8:00 AM	E-625, E-603, E-607, E-627, I-503, I-501, I-513, I-515, D-411, D-401, C-207, V-107
	8:30 AM	E-617, E-629, E-619, I-521, I-523, I-539, T-807, D-413, D-415, D-417, C-215, V-109
	9:00 AM	E-633, E-611, E-631, E-621, I-517, I-519, I-537, I-547, I-531, T-805, T-801, D-427, D-405, C-203
	9:30 AM	E-609, E-613, I-549, I-525, I-551, I-529, I-533, D-403, D-419, C-213, V-105
	10:00 AM	I-535, I-527, I-553, T-803, D-729, C-201, V-103, V-101

ATLANTA SCIENCE FESTIVAL

BREAKDOWN & LOAD-OUT:

- Exhibits must remain active and available until 4:00PM. Event strike begins at 4:10PM. Please help us clear the park by shutting down your exhibit at 4:00PM.
- Please breakdown your booth completely and pack everything up before you bring your vehicles around to load. We will have strike volunteers that can help you pack up and wait with your items while you bring your vehicle around.
- All exhibits must be taken down and have breakdown complete with all items removed no later than 6:00PM.
- Please report to the same DOCK where you off-landed. Load as quickly as possible so we can accommodate everyone exiting in a timely manner. Below is the DOCK schedule for strike. If you are not packed up and ready for your strike time; don't worry, just bring your vehicle around as close to your timing as possible.

BREAKDOWN & LOAD-OUT DOCK SCHEDULE:

DOCK ONE (Labeled in Pink Box on the Attached Map)	TIMES	BOOTH NUMBERS
	4:10 PM	T-701, T-705, T-719
	4:25 PM	T-703, T-707, T-709
	4:45 PM	T-711, T-713, T-715, T-717
	5:00 PM	T-719, T-721, T-723, T-725
	5:30 PM	T-725, T-729

DOCK TWO (Labeled in Teal Box on the Attached Map)	TIMES	BOOTH & VEHICLE NUMBERS
	4:10 PM	V-103, V-101, E-641, E-639, E-637, E-635, I-541, I-543, I-545, D-421, D-407, D-425, C-211, C-209
	4:25 PM	E-601, E-615, E-605, E-623, I-511, I-509, I-507, I-505, D-423, D-409, P-301, C-205
	4:45 PM	E-625, E-603, E-607, E-627, I-503, I-501, I-513, I-515, D-411, D-401, C-207, V-107
	5:00 PM	E-617, E-629, E-619, I-521, I-523, I-539, T-807, D-413, D-415, D-417, C-215, V-109
	5:15 PM	E-633, E-611, E-631, E-621, I-517, I-519, I-537, I-547, I-531, T-805, T-801, D-427, D-405, C-203
	5:30 PM	E-633, E-611, E-631, E-621, I-517, I-519, I-537, I-547, I-531, T-805, T-801, D-427, D-405, C-203
5:45 PM	E-609, E-613, I-549, I-525, I-551, I-529, I-533, D-403, D-419, C-213, V-105, I-535, I-527, I-553, T-803, D-729, C-201	

If you have a major time conflict with your scheduled time please notify Andi Chaney at achaney@destinationsouth.com or 404.702.2885. We will do our best to accommodate special requests.

ATLANTA SCIENCE FESTIVAL

DIRECTIONS TO THE LOADING “DOCK” LOCATIONS:

❖ **To DOCK ONE (Appendix A- Pink Box on Map)**

◦ **Traveling 75/85 South –**

From 75/85 South take exit 249C towards Williams St/World Congress Center/GA Dome/Aquarium. Turn right onto Ivan Allen Jr. Blvd. Turn left on Centennial Olympic Park Dr NW. Continue on Centennial Olympic Park Dr NW. Get all the way into the far right lane, next to the Park. Stop on the right curb along the Park between John Portman Boulevard (formerly Harris Street) and Andrew Young International Boulevard. This lane will be coned off. Please check in with the event staff in the yellow shirts. They will allow you access into the Park and give you further instructions on where to pull to off-load your vehicle.

◦ **Traveling 75/85 North –**

Follow I-75 N and I-85 N to Spring St NW in Atlanta. Take exit 249D from I-85 N. Turn right onto Spring St NW. Keep right to continue on Spring Techwood Conn NW. Continue onto Centennial Olympic Park Dr NW. Get all the way into the far right lane, next to the Park. Stop on the right curb along the Park between John Portman Boulevard (formerly Harris Street) and Andrew Young International Boulevard. Please check in with the event staff in the yellow shirts. They will allow you access into the Park and give you further instructions on where to pull to off-load your vehicle.

❖ **To Dock TWO: (Appendix A-Teal Box on Map)**

◦ **Traveling 75/85 South –**

From 75/85 South take exit 249C towards Williams St/World Congress Center/GA Dome/Aquarium. Turn right into Ivan Allen Jr. Blvd. Turn left on Centennial Olympic Park Dr NW. Continue on Centennial Olympic Park Dr NW. Turn right on to Marietta St. At the first light turn right on to Andrew Young International. There will be a barricade at this turn or an off duty police officer. Please check in with the event staff in the yellow shirts. They will allow you access to Andrew Young International and give you further instructions on where to pull to off-load your vehicle.

◦ **Traveling 75/85 North –**

Follow I-75 N and I-85 N to Spring St NW in Atlanta. Take exit 249D from I-85 N. Turn right onto Spring St NW. Keep right to continue on Spring Techwood Conn NW. Continue onto Centennial Olympic Park Dr NW. Turn right on to Marietta St. At the first light turn right on to Andrew Young International. There will be a barricade at this turn or an off duty police officer.. Please check in with the event staff in the yellow shirts. They will allow you access to Andrew Young International and give you further instructions on where to pull to off-load your vehicle.

ATLANTA SCIENCE FESTIVAL

VEHICLE DETAILS: If you have an approved mobile/vehicle exhibit, please have the vehicle in place no later than 10:30AM. After 10:45AM you will not be granted access to Andrew Young International. All vehicles must remain on-site and unmoved until the conclusion of the event at 4:00PM. Follow the directions above to **Dock Two** to get your vehicle in position.

MASHALLING YARD PASSES: If you have a large vehicle or truck that will not fit in a parking lot of garage, you will be able to purchase a Marshaling Yard for \$25 CASH from your exhibit booth zone manager upon arrival.

EXHIBITOR SUPPORT BOOTH: During set-up of the event should you need any assistance that is not an emergency please go to our exhibitor support booth. It is highlighted in yellow on your event map. Kellie Bishop will be there all day to help you with anything you may need. If you are in need of assistance and unable to leave your booth, please reach out to one of the many volunteers in the pink Atlanta Science Festival shirts. They will be roaming in your zone to make sure you have everything you need.

INTERNET/WI-FI & ELECTRICITY:

- A dedicated wireless network will not be provided. There is a public Wi-Fi network that is available throughout the park, however it is slow. If your booth requires the need for Internet, we recommend you use your own wireless hotspot on-site.
- If you need any additional power needs for your exhibit, you will be able to purchase additional power and/or water on-site at the Exhibitor Services Tent. You will be able to pay with cash as well as card.

ADDITIONAL IMPORTANT INFORMATION: During the event should you need assistance please locate a police officer roaming the park, one of the Destination South Meetings & Events Staff in Yellow Polos with radios or a member of the Expo volunteers in pink colored Atlanta Science Festival T-shirts.

ATLANTA SCIENCE FESTIVAL

PARKING AFTER OFF-LOADING:

Below is a list of paid parking decks and surface lots around the perimeter of the park:

HILTON GARDEN INN PARKING GARAGE

275 Baker St., NW, Atlanta, GA 30313
Other rates: \$10 for 8 hours; \$20 for 8-12 hours
Valet Parking: \$10 for 3 hours, \$15 for 6 hours, \$20 for 8 hours, \$24 for 12 hours.
Payments Accepted: Visa, MasterCard, Discover, American Express, Cash

123 MARIETTA STREET PARKING LOT

123 Marietta St., NW, Atlanta, GA 30303
Payments Accepted: Visa, MasterCard, Discover, American Express

CNN DECK

30 Spring St., SW, Atlanta, GA 30303
Payments Accepted: Visa, MasterCard, Discover, American Express, Cash

COLLEGE FOOTBALL HALL OF FAME PARKING DECK

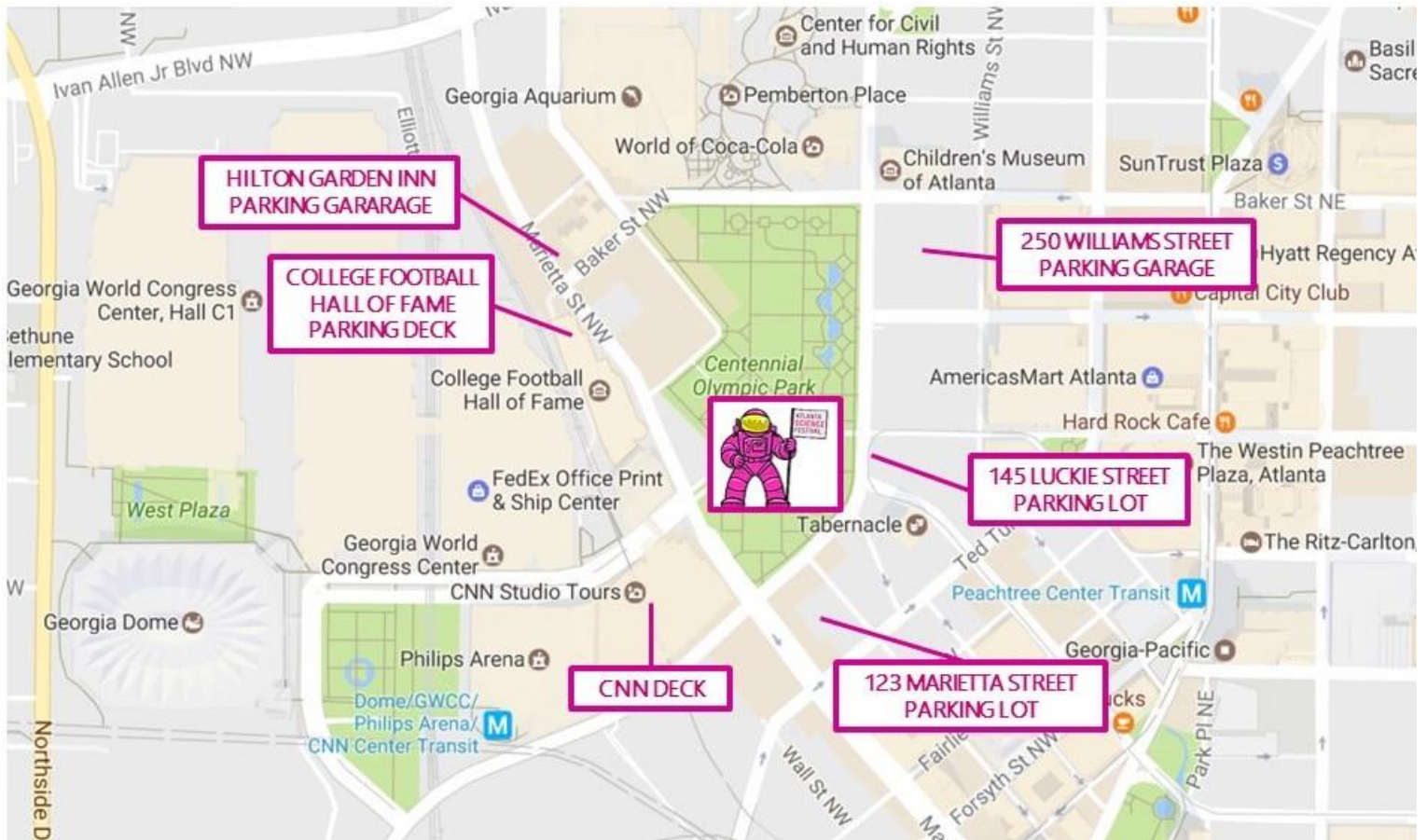
250 Marietta St. NW, Atlanta, GA 30303
Payments Accepted: Visa, MasterCard, Discover, American Express, Cash

145 LUCKIE STREET PARKING LOT

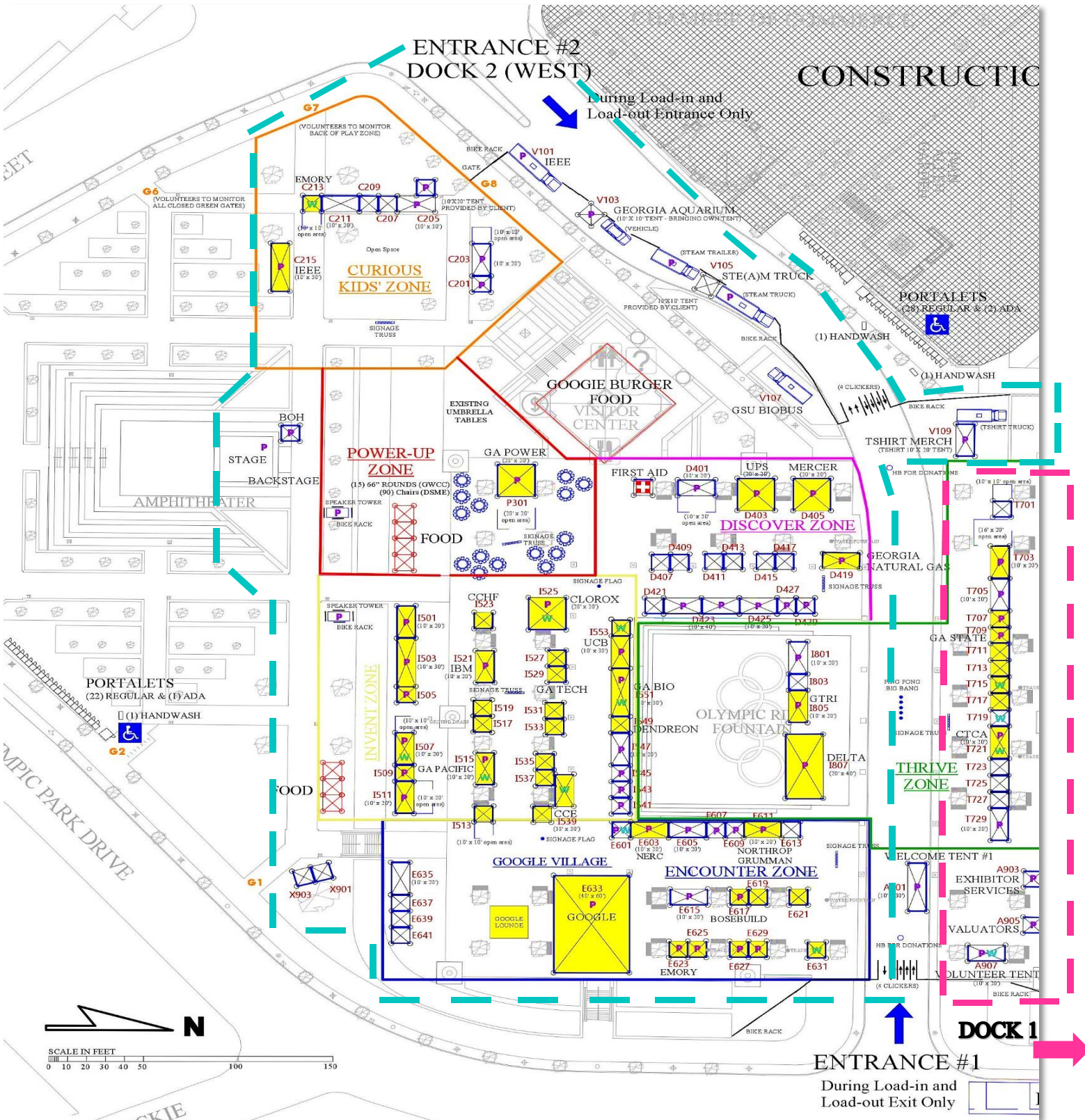
145 Luckie St., NW, Atlanta, GA 30303
Early Bird Rate: \$5 Flat Rate with entry before 8:30 AM and exit by 6:00 PM
Payments Accepted: Visa, MasterCard, American Express, Cash, Passport Parking App

250 WILLIAMS STREET PARKING GARAGE

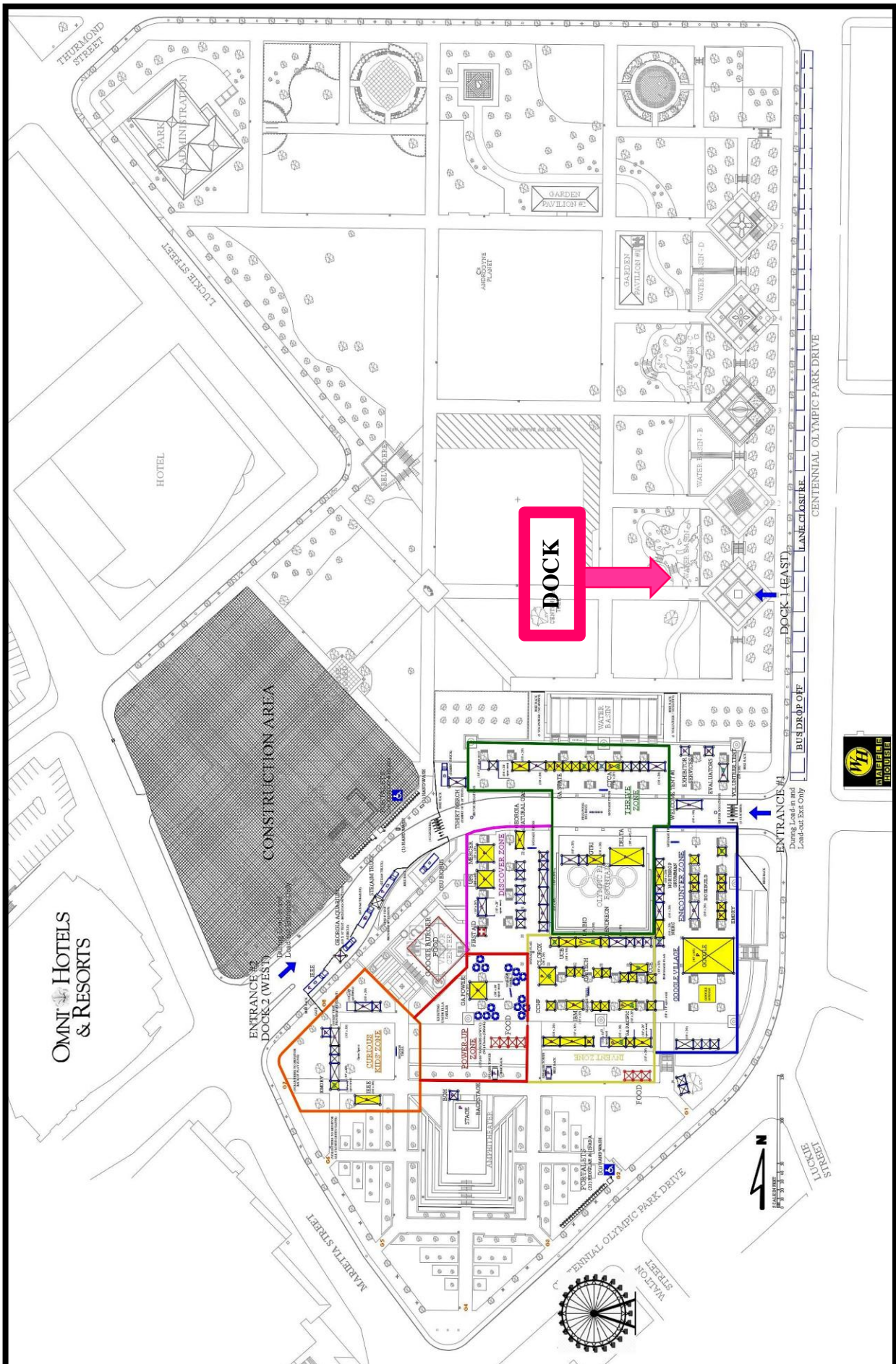
250 Williams St., NW, Atlanta, GA 30303
American Cancer Society Center
Other rates: \$1 for 20 minutes, \$1 for each additional 20 minutes, \$10 for over 2 hours
Payments Accepted: Visa, MasterCard, Discover, American Express, Cash



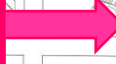
APPENDIX A



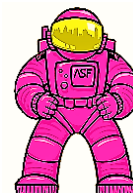
APPENDIX A-1



DOCK

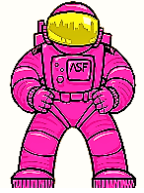


EXPO BOOTH ASSIGNMENTS



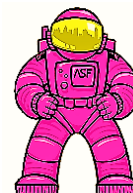
COMPANY	SPONSOR LEVEL	BOOTH #	ZONE	TITLE OF ACTIVITY
21st Century STEM Academy		E-601	ENCOUNTER	Robots and PancakeBots!
21st Century STEM Foundation		I-541	INVENT	Drones at Work - the Science of it All!
American Chemical Society and The Wood Acres School		D-423	DISCOVER	Time Bandit - Crime Scene & Time Bandit - Forensics Laboratory
Ape Cognition and Conservation Initiative		I-545	INVENT	Interacting with Apes!
ARRL Georgia Section		E-615	ENCOUNTER	Amateur (Ham) Radio is Science
ASF Volunteers		A-907	ADMIN	ASF Volunteers
ASHRAE		C-211	CURIOUS KIDS'	Under Pressure! Balloon Rocket Race
Atlanta Science Festival		D-413	DISCOVER	#speakup4science
Atlanta Section of IEEE	Krypton	C-215	CURIOUS KIDS'	The Engineer's Workshop
Biognite		E-641	ENCOUNTER	Stem Cell Plinko
Blue Heron Nature Preserve		E-639	ENCOUNTER	The Art of Nature: Earth Art in a City Park
BOSEBuild	Titanium	E-617	ENCOUNTER	Speaker Cube - Uncover What is at the Heart of Every Speaker
Brain Injury Association of Georgia		D-417	DISCOVER	What is a Traumatic Brain Injury?
Cancer Treatment Centers of America	Copper	T-721	THRIVE	The Evolutionary War on Lung Cancer: Hope is Here
Centennial Academy		C-201	CURIOUS KIDS'	STEMtennial
Center for Chemical Evolution	Copper	I-539	INVENT	Evolving Chemicals on the Tabletop & Science Caricatures
Center for Selective C-H Functionalization	Copper	I-523	INVENT	Discover Your Inner Chemist!
Centers for Disease Control & Prevention (CDC)		E-613	ENCOUNTER	Protecting Lives, Saving People
Chattahoochee Nature Center		E-637	ENCOUNTER	Wonders of Wetlands
Chattahoochee Technical College		T-705	THRIVE	Bodies, Brains & Bugs
Community Guilds - STE(A)M Truck / Community Guilds - STE(A)M Trailer		V-105	VEHICLE	STEAM Truck student built projects in action!
Delta Airlines	Gold	T-807	THRIVE	Model Airplane Components-NO title on banner

EXPO BOOTH ASSIGNMENTS



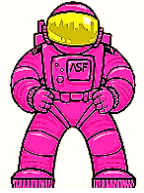
COMPANY	SPONSOR LEVEL	BOOTH #	ZONE	TITLE OF ACTIVITY
Dendreon	Titanium	I-549	INVENT	Immunotherapy: Teaching Cells to Target Cancer
Emory University ChEmory	Platinum	C-213	CURIOUS KIDS'	Fun and Funky Fluids
Emory University Department of Math and Computer Science	Platinum	E-619	ENCOUNTER	Space Chip Adventures
Emory University Department of Environmental Sciences	Platinum	E-621	ENCOUNTER	Measuring Air Quality
Emory University Department of Chemistry	Platinum	E-623	ENCOUNTER	Light Matters – How Light Reveals Our World
Emory University Herbarium	Platinum	E-625	ENCOUNTER	Smell the World
Emory University Child Study Center	Platinum	E-627	ENCOUNTER	Do You Know What Your Brain is Thinking?
Emory University Department of Cell Biology	Platinum	E-629	ENCOUNTER	Visualizing the Microscopic World
Emory University Center for the Study of Human Health	Platinum	E-631	ENCOUNTER	Got Water?
Evaluators		A-905	ADMIN	ASF Evaluators
Exhibitor Services		A-903	ADMIN	Exhibitor Services
Fernbank Museum of Natural History		D-409	DISCOVER	Macroinvertebrates Around You!
Georgia Aquarium		V-103	VEHICLE	Animal Meet and Greet
Georgia BioEd Institute	Krypton	I-551	INVENT	Georgia's Life Sciences Industry
Georgia Gwinnett College School of Science and Technology		C-209	CURIOUS KIDS'	Science, Technology and Fun!
Georgia Natural Gas	Copper	D-419	DISCOVER	
Georgia Power Company	Silver	P-301	POWER UP	How to Make and Move Electricity
Georgia Reptile Society		C-205	CURIOUS KIDS'	Remarkable Reptiles
Georgia State University Georgia Geographic Alliance	Silver	T-703	THRIVE	Where Would You Be Without Geography?
Georgia State University Math and Stat Club	Silver	T-707	THRIVE	Math, Art, and Games!
Georgia State University AMSA	Silver	T-709	THRIVE	Chemistry and Biochemistry Connections

EXPO BOOTH ASSIGNMENTS



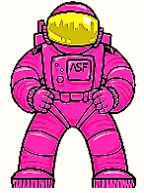
COMPANY	SPONSOR LEVEL	BOOTH #	ZONE	TITLE OF ACTIVITY
Georgia State University Collegiate Neuroscience Society	Silver	T-711	THRIVE	Smile Booth!
Georgia State University Pre-Pharmacy Professional Society	Silver	T-713	THRIVE	Look in the Mirror and See Something Different
Georgia State University Chemistry Club	Silver	T-715	THRIVE	Chemistry in Your Daily Life
Georgia State University Department of Biology	Silver	T-717	THRIVE	BioBrick: Synthetic Biology in Atlanta
Georgia State University		V-107	VEHICLE	The Bio-Bus Sampler
Georgia Tech School of Physics	Platinum	I-501	INVENT	Physics Peep Show
Georgia Tech College of Computing	Platinum	I-503	INVENT	Super Cool Computer Science
Georgia Tech School of Earth and Atmospheric Sciences	Platinum	I-507	INVENT	Ocean Discovery Zone
Georgia Tech Planetary Society	Platinum	I-509	INVENT	Planets, Moons, Spacecraft and More from Our Solar System!
Georgia Tech School of Applied Physiology	Platinum	I-513	INVENT	Go Further, Jump Higher, Be Stronger
Georgia Tech Student Polymer Network	Platinum	I-519	INVENT	Polymer Putty and Frozen Marshmallows
Georgia Tech Department of Biology	Platinum	I-527	INVENT	DNA: Let's Repair It
Georgia Tech Human Factors/Ergonomics	Platinum	I-529	INVENT	Human Factors Space Race: Humans vs. Aliens
Georgia Tech College of Sciences - SMART Program	Platinum	I-531	INVENT	Carbon Dioxide Bubble Bombs
Georgia Tech BME HealthReach	Platinum	I-533	INVENT	Science for EveryBODY
Georgia Tech BBUGS	Platinum	I-535	INVENT	Osmosis Spudosis: The Magic Potato
Georgia Tech American Chemical Society	Platinum	I-537	INVENT	Polarity: Rainbows, Lab, and Blobs!
Georgia Tech - BBUGS	Platinum	I-517	INVENT	Heart-Touching: The Ins and Outs of Love
Georgia Tech - CEISMC	Platinum	I-511	INVENT	Makers Meet
Georgia Tech - EarSketch	Platinum	I-505	INVENT	Code Your Own Music!
Georgia Tech Research Institute	Krypton	T-805	THRIVE	Science Scopes & Tomahawk Tossers
Georgia-Pacific	Silver	I-515	INVENT	Renewable Resources from Trees

EXPO BOOTH ASSIGNMENTS



COMPANY	SPONSOR LEVEL	BOOTH #	ZONE	TITLE OF ACTIVITY
Girl Scouts of Greater Atlanta & SciStarter		D-411	DISCOVER	Become a Citizen Scientist
Google	Gold	E-633	GOOGLE VILLAGE	Google Village
Guerilla Haiku Movement		T-701	THRIVE	The Art of Sciku, the Science Haiku
High Touch High Tech		I-543	INVENT	The Body Shop
How Stuff Works, Inc.		T-801	THRIVE	Space - The Final Frontier
IBM Corporation	Krypton	I-521	INVENT	Exploring STEM with IBM
IEEE USA		V-101	VEHICLE	MOVE Project - Community Outreach Initiative
Kell Robotics		D-401	DISCOVER	Robots Robots!!
Kennesaw State University Department of Chemistry and Biochemistry		T-729	THRIVE	The Element of Surprise!
MEL Science Ltd.		D-427	DISCOVER	Chemistry at your Fingertips
Mercer University & Mercer Health Sciences Center	Silver	D-405	DISCOVER	The Mercer Science Workshop
Museum of Design Atlanta		D-407	DISCOVER	Making with MODA
NASA Kennedy Space Center		D-425	DISCOVER	Not Just Rocket Science
North American Electric Reliability Corporation	Titanium	E-603	ENCOUNTER	Through the Plug!
Northrop Grumman Corporation	Copper	E-611	ENCOUNTER	Solve the Outbreak
Nsoromma School		E-635	ENCOUNTER	STEAMing Stars!
PaliProto 3D Studio		E-605	ENCOUNTER	Learning in 3D
Philadelphia College of Osteopathic Medicine – GA Campus		T-719	THRIVE	A Taste of Science and Medicine
Piedmont Park Conservancy		D-421	DISCOVER	What is the Buzz on Bees?
SfN Atlanta & Center for Behavioral Neuroscience		I-547	INVENT	Hey, You Touched My Brain!
Spelman College Department of Biology		D-429	DISCOVER	Can You Believe Your Eyes?
Start Code		E-607	ENCOUNTER	Python Coding with Minecraft

EXPO BOOTH ASSIGNMENTS



COMPANY	SPONSOR LEVEL	BOOTH #	ZONE	TITLE OF ACTIVITY
The Clorox Company	Silver	I-525	INVENT	We Make Everyday Life Better, Every Day
The Flying Classroom		T-803	THRIVE	Soar into STEM
The Howard School		E-609	ENCOUNTER	Picking Up STEAM
The SAE School		C-203	CURIOUS KIDS'	Energize This!
UCB, Inc.	Copper	I-553	INVENT	The Science of the Canine-Human Bond
UCB, Inc.	Copper	I-553	INVENT	The Science of the Canine-Human Bond
UGA Cooperative Extension		T-723	THRIVE	Wash Your Paws!
UGA Cooperative Extension		T-725	THRIVE	Gneiss Rocks! Discovering Rocks and Minerals with 4-H
UGA Cooperative Extension		T-727	THRIVE	Pollinators and Beneficial Insects
UPS	Silver	D-403	DISCOVER	Interactive Serious Gaming
Waldorf School of Atlanta		D-415	DISCOVER	Magical Smoke to Flame! Musical Copper Rods!
Welcome Tent		A-901	ADMIN	Welcome
Worldwide Shirts		V-109	VEHICLE	Print Your Own ASF T-shirt!
Zoo Atlanta		C-207	CURIOUS KIDS'	Great Adaptations: Predator vs. Prey